



A VIEW TO A THRILL

Prestige takes an exclusive look inside a penthouse at Dubai's Index Tower to sample some James Bond style bachelor living

TEXT: Kirsty Savage IMAGES: Bahr Karim

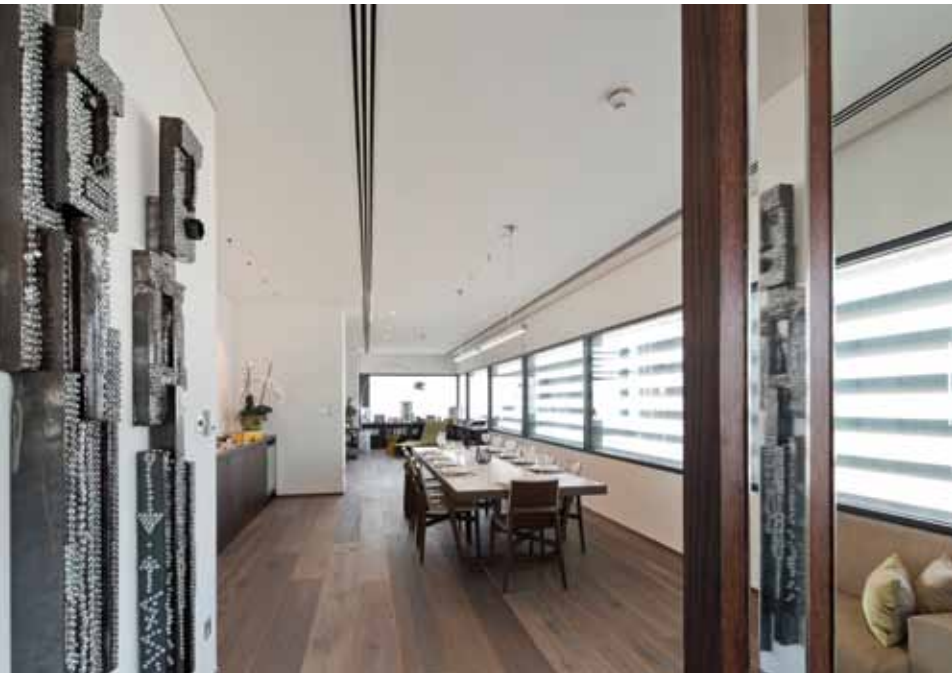


With undoubtedly one of the best vantage points in Dubai, the penthouse apartments at Index Tower offer streamlined glamour and vast, uber cool room interiors that would surely make 007 feel right at home.

Recently, *Prestige* was invited by Viktor Udzenija, one of the original architects behind the project working alongside the famous Fosters and Partners, to tour the building and size up its design – and it makes a lasting impression, as our photo shoot testifies.

Intended to become a regional landmark, Index Tower soars 328 metres into the sky and as well as apartments and penthouses, is home to state-of-the-art offices designed for multi-national corporations.

The brief for Index Tower was simple: create a modern and non-crowded atmosphere with as much light and open space as possible, using only warm colours – no black or dark shades. In the penthouses the aim was to create several areas offering distinctly different uses such as a party area, reading corner, formal reception, lounge and television zone and a home office.



NATURAL SIMPLICITY
The long airy spaces in Index Tower penthouses allow residents to move around freely. Natural materials and a soft colour scheme give the rooms a back-to-basics feel, while strong wooden furniture pieces produce a subtle masculine mood



IMPRESSIONS OF THE MIDDLE EAST
A stunning painting by Syrian artist Lalla Essaydi hangs elegantly on a lounge wall and is allowed to breathe, uncluttered by excess furniture or ornamentation



OBJETS D'ART
The owner's exquisite artistic eye is evident all around and the penthouses vast ceiling heights and huge walls offer gallery-like display spaces



INDEX TOWER

Description: Multi-purpose building comprising high-tech offices and luxury apartments
Location: Dubai International Financial Centre (DIFC)
Height: 328 metres
Storeys: 80
Floors: 40 apartment floors, 25 office floors, 7 penthouses floors, 3 retail outlet floors
Opened: 2010

KEY FEATURES

- Double height sky lobby with recreational facilities including swimming pool and health club
- Basement parking
- Four high-speed passenger lifts
- East to west orientation to maximise views across Dubai and the coastline and to reduce solar gain
- A series of sunshades that shelter the interiors on the exposed south elevation
- Generously landscaped podium level and dramatic quadruple-height foyer

"One of the most impressive features of the apartment is the six-and-a-half metre high ceilings in the formal and casual living rooms and the inserted mezzanine level"

Space for contemplation

We were invited by the owner to take a tour of a stunning 734 sq m, four bedroom duplex penthouse apartment and the first thing you notice, apart from the sheer size of the place, is the jaw-dropping view offering a 360 degree look across Dubai. According to architect Udzenija, the aim was to create modern, clean, elegant and functional spaces for living and entertainment. In fact, the original layout of the apartment was greatly altered as the project progressed, with several intermediate walls as well as a heavy steel spiral staircase leading up to the mezzanine in the main living room removed to open up the floor plan and make the apartment more airy. This also connected the main living and entertainment areas allowing free flow of movement and views across the entire apartment towards both the Emirates Towers in the north and the Burj Khalifa in the south. One of the most impressive features of the apartment is the six-and-a-half metre high ceilings in the formal and casual living rooms and the inserted mezzanine level. The size of these spaces is further enhanced by impressive two metre wide chandeliers that contrast against the grey painted ceilings.



Passion for culture

The space was also ideal for showcasing the owner's vast art collection by leading modern and contemporary names from the Middle East, which is complemented by a restrained interior design ethic. This love of fine art emits from every corner of the penthouse, most pieces having been collected over the years through auctions at Christie's. A beautiful painting by top Syrian artist Safwan Dahoul is one of the main works in the living room area and there are also several eye-catching pieces from Turkey's Gaia & Gino. With its huge, airy rooms and tasteful but minimalist design style, this Index Tower penthouse oozes man-about-town chic that could easily be the backdrop for a scene in the next James Bond outing. 📍



SPACES TO THINK
The numerous relaxation areas in the property are enhanced by a unique collection of seating designs, each positioned to make the most of Dubai's magnificent sprawling cityscape